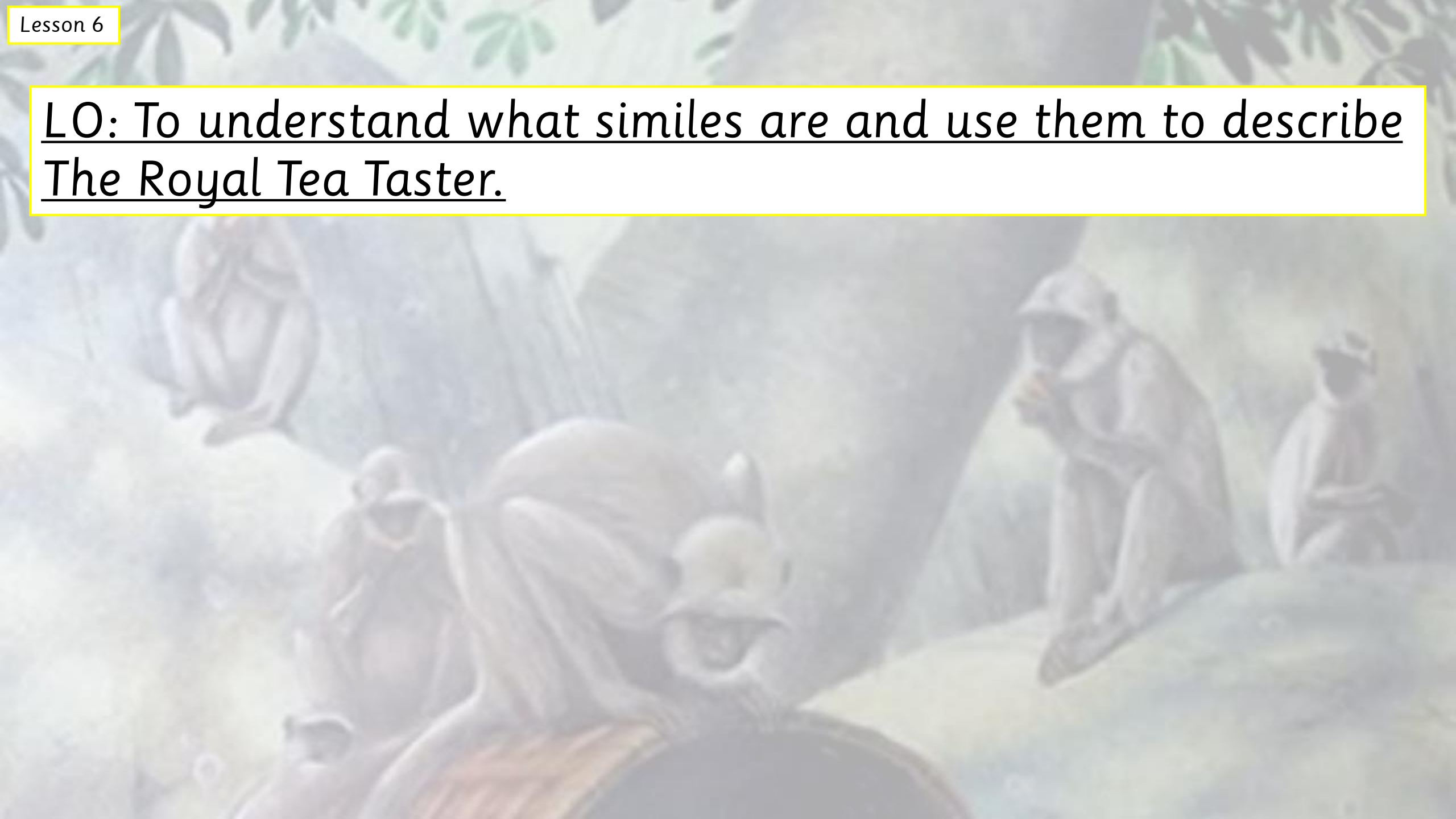


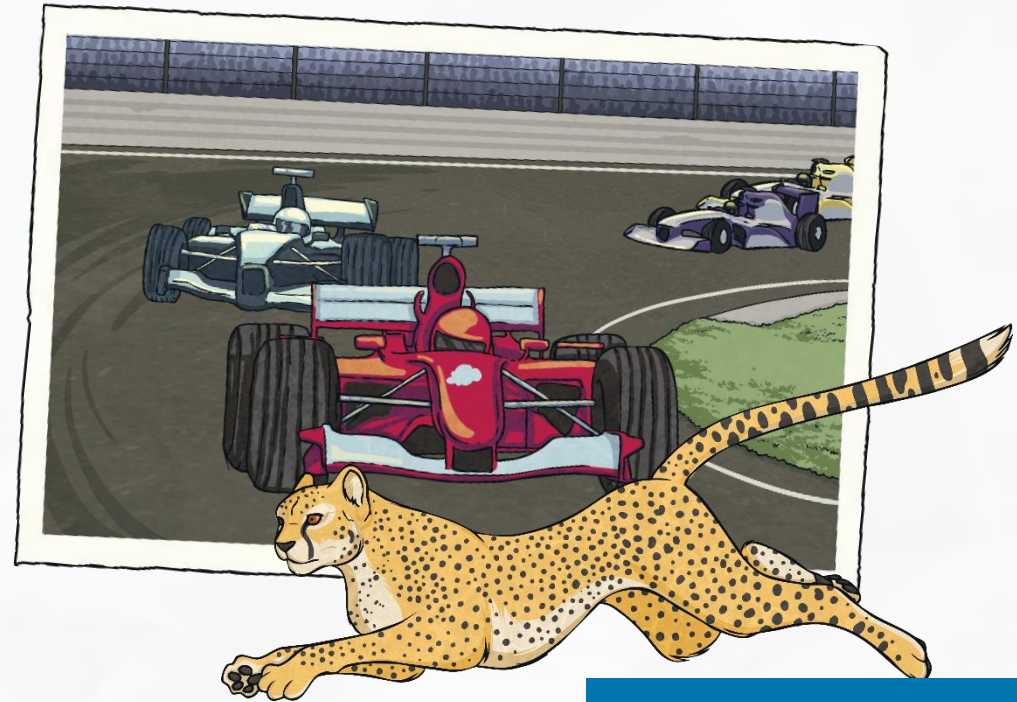
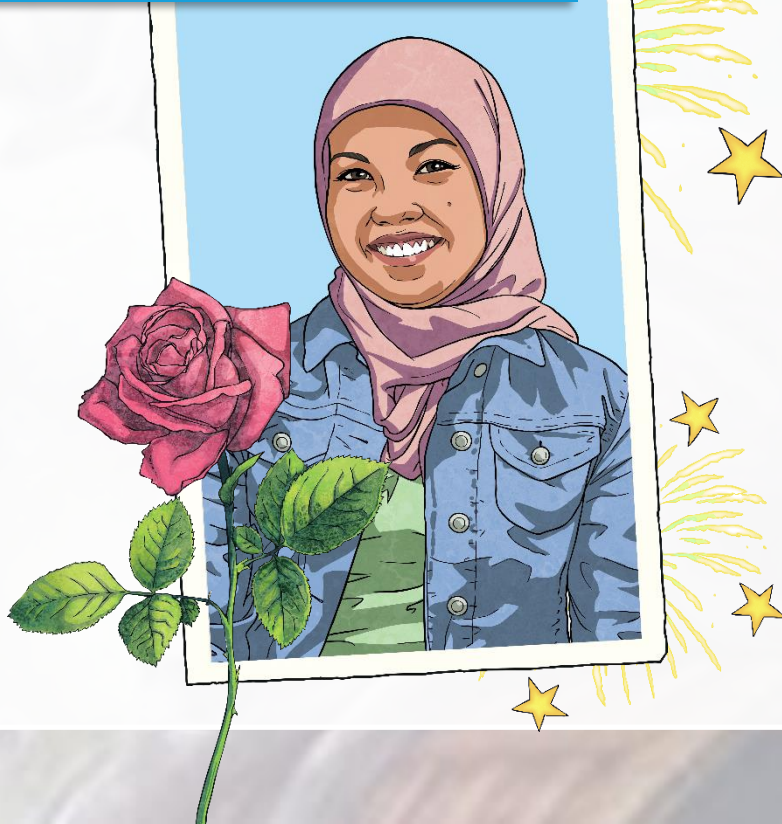
LO: To understand what similes are and use them to describe
The Royal Tea Taster.



Simile Reminder

A simile is a way of describing something by comparing it to something else using 'like' or 'as'.

Her eyes are like stars and her lips are like roses.



The car was as fast as a cheetah

Why?

Why do we use similes and adjectives?



When you are describing something, you are trying to create a picture in the reader's mind. Similes can help you to do this.

They are most often used in stories and poems.

Now you try...

Finish the similes:



The doll's face was as smooth as...

Greece was hot like...

The book was as exciting as...

The night was as black as...

The fireworks were colourful like...

Look at your adjectives from yesterday.
Can you use them to create similes about the
Royal Tea Tasters appearance?

