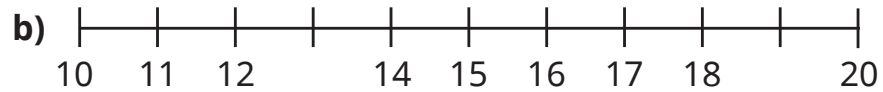
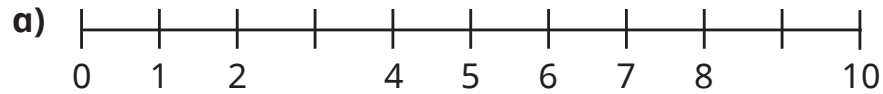


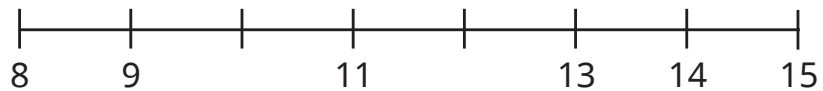
1 Complete the number lines.



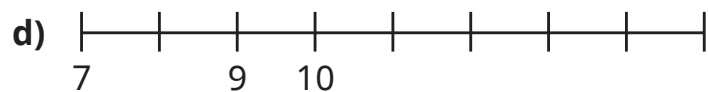
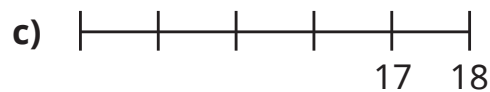
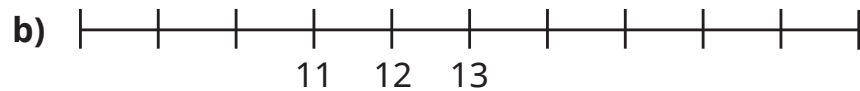
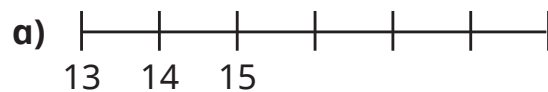
What do you notice?



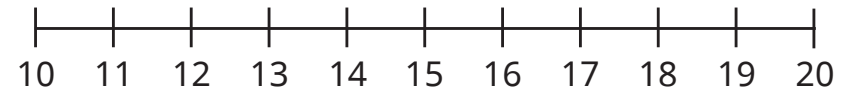
2 Complete the number line.



3 Complete the number lines.

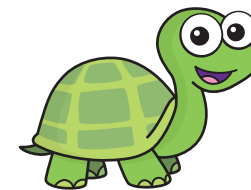
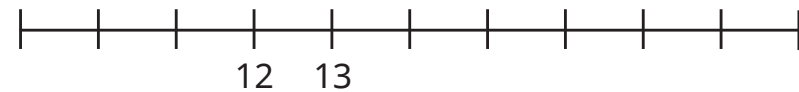


4 Here is a number line.



- a) Where is the number thirteen?
- b) Where is the number twenty?

5 Tiny wants to label the start and end of the number line.



The start is 10 and the end is 20

- a) What mistake has Tiny made?
- b) What are the start and end numbers on the number line?

